

WALL MOUNT BRACKET



LogTag®

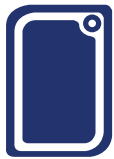
Wall Mount
Bracket



The LogTag® Wall Mount Bracket provides an easy and tidy solution to mounting a LogTag® on a wall, door or vertical surface while still allowing easy removal of the LogTag® for download etc.

Fixing can be by the supplied double coated foam tape which offers very high bond strength on smooth unified surfaces or by optionally fixing with screws.

Features



Molded in polycarbonate plastic to allow use in a large range of environments.



Accepts all LogTag products including UTRED30/UTREL30 Loggers. Excludes TIC20/TICT/iS0°Tag.



Manufactured to meet the European RoHS Directive.



Easy removal of the LogTag logger for download etc.

Applications



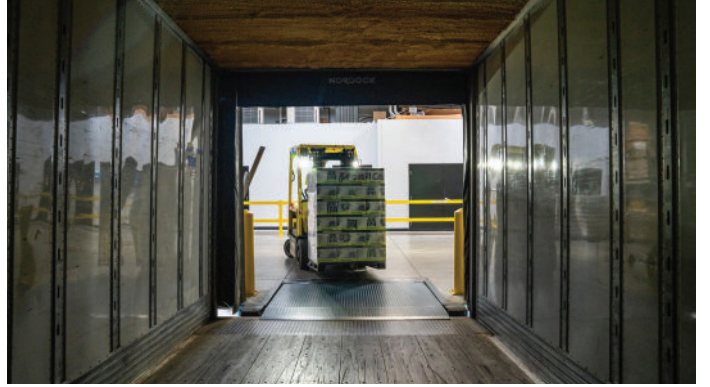
Cool Stores



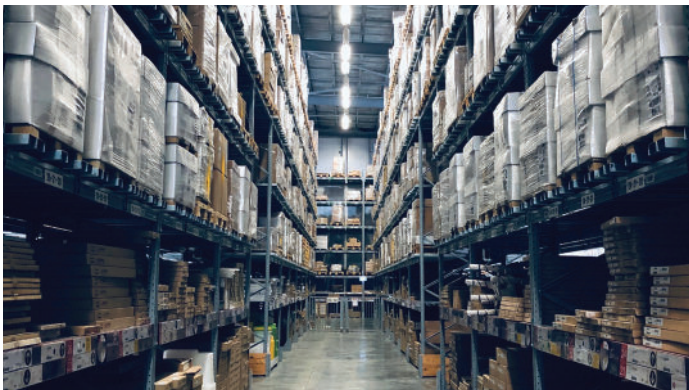
Shipping Containers



Freezers



Freight



Warehouse



Refrigerators

Specifications

Product Model	Wall Mount Bracket
LogTag® part code	200-000010 WMB-01 (for all conventional loggers) WMB-02 (for UTRED30 and UTREL30 Loggers)
LogTag® models supported	All LogTag products including UTRED30/UTREL30 Loggers. Excludes TIC20/TICT/iS0®Tag
Case material	Polycarbonate plastic

Fixing with supplied foam tape instructions:

The supplied foam tape (3M #4032) is sized to fit into the central channel at the back of the wall mount bracket

1. To obtain optimum adhesion, the bonding surfaces (i.e the back of the bracket and the mounting surface) must be clean, dry and well unified. Typical surface cleaning solvents are isopropyl alcohol* and water (rubbing alcohol) or heptane. Ideal tape application temperature range is 21°C to 38°C (70°F to 100°F). Initial tape application to surfaces at temperatures below 10°C (50°F) is not recommended because the adhesive becomes too firm to adhere readily. However, once properly applied, low temperature holding is generally satisfactory.
2. Remove the backing tape of one side of the foam tape and press fit exposed adhesive side of tape into back channel of bracket.
3. Remove other backing tape and press-fit bracket carefully to position desired. Be careful to place in correct position as once affixed it is very difficult to remove.

**Note: Be sure to follow the manufacturer's precautions and directions for use when using solvents.*